

December 7, 2020

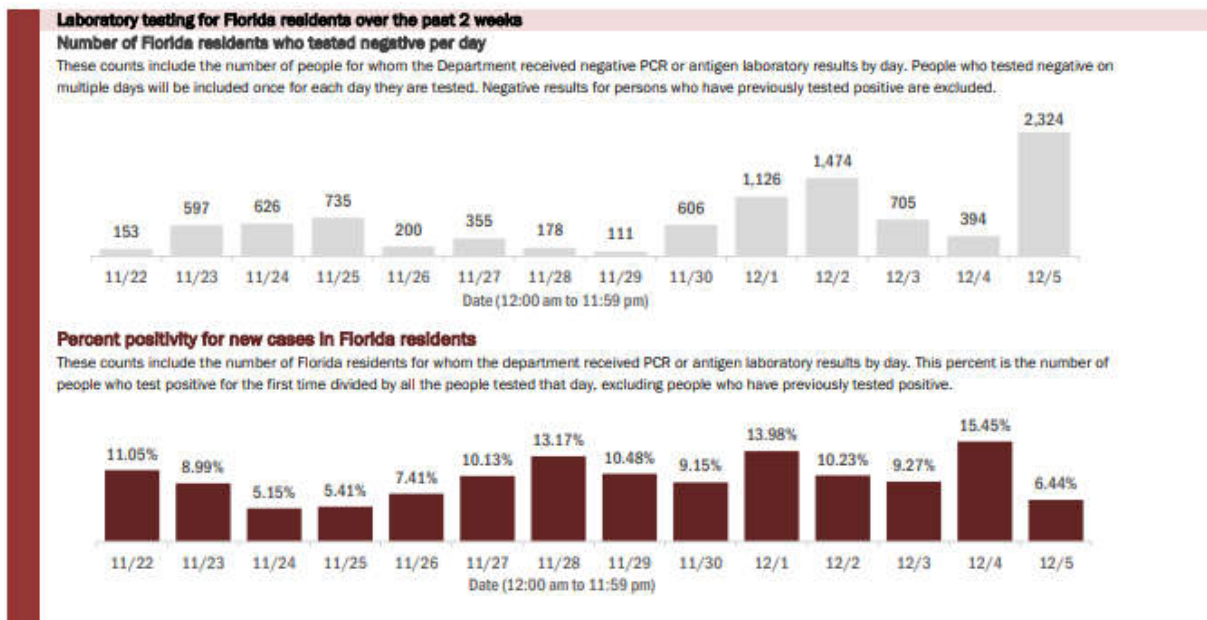
## DEPARTMENT OF HEALTH IN BAY COUNTY PROVIDES WEEKLY COVID-19 UPDATE



**Contact:**

Heather Kretzer  
[Heather.Kretzer@FLHealth.gov](mailto:Heather.Kretzer@FLHealth.gov)  
(850) 252-9670

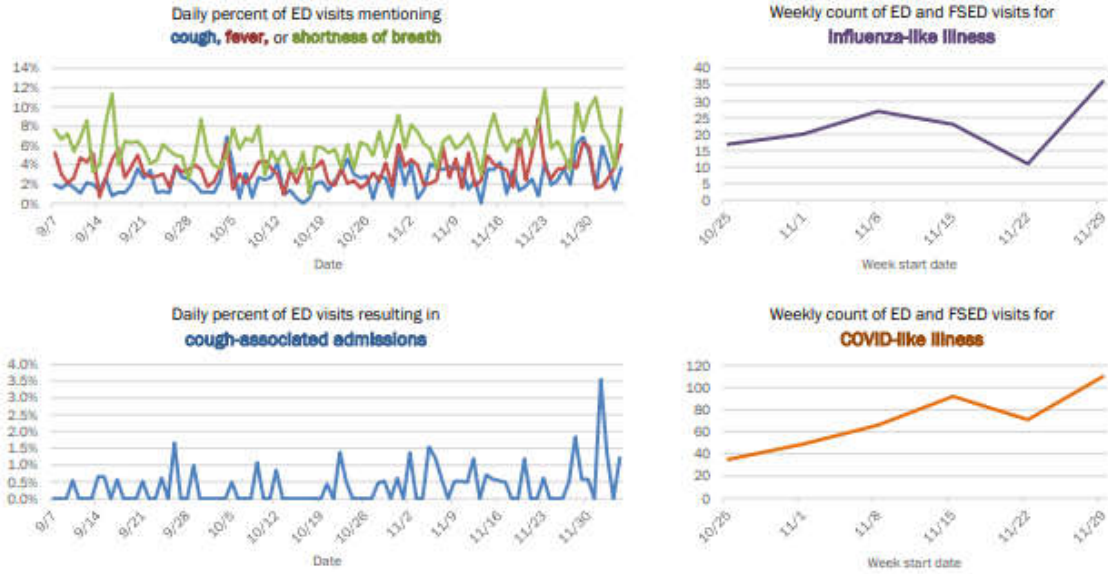
**Panama City, Fla.**— Today, the Florida Department of Health in Bay County (DOH-Bay) issued a weekly update on COVID-19. The percent positivity for new cases in Bay County residents has increased from 8.57 for the week of November 21 to 10.97 percent for the week for November 27. The COVID-19 daily reports continue to be updated daily and the Florida Department of Health COVID-19 Dashboard also continues to be updated daily. Please find all daily reports [here](#).



### Hospitalizations:

As posted on the Agency for Health Care Administration [dashboard](#), there are 44 persons in Bay County hospitals with a primary diagnosis of COVID-19. The total hospitalizations of Bay County residents are at 447 (5% of all cases).

**Emergency department (ED) and freestanding ED (FSED) chief complaint and admission data for Bay County**



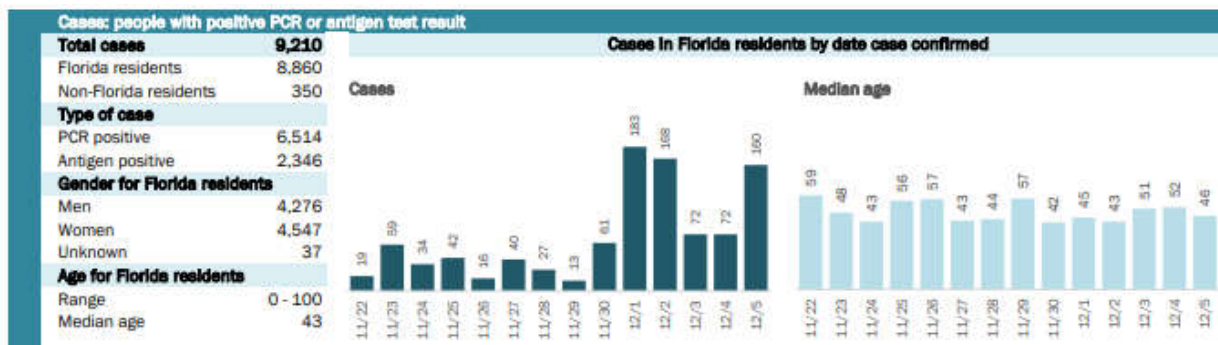
The Electronic Surveillance System for the Early Notification of Community-Based Epidemics (ESSENCE-FL) includes chief complaint data from 211 of 211 Florida EDs and 88 of 89 Florida FSEDs. Data are transmitted electronically to ESSENCE-FL daily or hourly.

**Positive test results:**

DOH-Bay received confirmation of 729 additional cases of COVID-19 in Bay County residents for the past 7 days and a total of 966 cases for the past 14 days. Cases per 100,000 people is at 4,855.

Bay County’s total case count is at 9,210 including 8,860 residents and 350 non-residents.

Cities of Bay County cases based on patient’s ZIP Code: Panama City (5,719), Panama City Beach (1,299), Lynn Haven (1,272), Youngstown (216), Southport (131), Fountain (96), Callaway (44), Tyndall Air Force Base (32), Mexico Beach (14), Parker (8), Ebro (5), Vernon (3), Seacrest (3), Inlet Beach (3), Bayou George (2), Alys Beach (1), Rosemary Beach (1), Missing (2), and Watersound (1).



**COVID-19 Related Deaths:**

There have been 172 COVID-19 related deaths (2% of all cases) of Bay County residents. DOH-Bay offers condolences to the families and will continue to work diligently with our community partners to prevent the spread of COVID-19.

Age group	All cases		New cases (12/05)		Hospitalizations		Deaths	
0-4 years	78	1%	1	1%	3	1%	0	0%
5-14 years	280	3%	8	5%	1	0%	0	0%
15-24 years	1,272	14%	28	18%	6	1%	0	0%
25-34 years	1,539	17%	14	9%	16	4%	1	1%
35-44 years	1,449	16%	22	14%	33	7%	4	2%
45-54 years	1,460	16%	20	13%	59	13%	17	10%
55-64 years	1,341	15%	35	22%	79	18%	22	13%
65-74 years	858	10%	17	11%	104	23%	47	27%
75-84 years	426	5%	12	8%	103	23%	49	28%
85+ years	157	2%	3	2%	43	10%	32	19%
Unknown	0	0%	0	0%	0	0%	0	0%
<b>Total</b>	<b>8,860</b>		<b>160</b>		<b>447</b>		<b>172</b>	

**Hospitalization** counts include anyone who was hospitalized at some point during their illness. It does not reflect the number of people currently hospitalized.  
**Other race** includes any person with a race of American Indian/Alaskan native, Asian, native Hawaiian/Pacific Islander, or other.

### Florida long-term care facility data:

- To date, 39 Bay County residents that were staff or residents of a long-term care facility have died and there have been 442 (5% of all cases) cases in facility staff/residents.
- The list of long-term care facilities with active COVID-19 cases is available [here](#).
- The list of long-term care facilities with deaths is available [here](#), which is updated weekly.

*Data is preliminary and subject to change based on public health investigations.*

### Testing

#### Bay County Testing by Walk On

Lynn Haven Sports Park, 2201 Recreation Drive

Panama City Sports Park, 50 Chip Seal Parkway (New location beginning Monday, November 23)

Hours: Monday, Wednesday, and Friday from 7 a.m. to 3 p.m. and Tuesday and Thursday from 10 a.m. to 6 p.m.

Criteria: Testing is available to adults over 18 and children ages 5 and up who are accompanied by an adult.

Cost: Free

Test Type: Antigen (rapid in 20 minutes) and PCR

*Appointment required.* To make an appointment, visit <https://www.baycountyfl.gov/587/COVID-19-INFORMATION>. Please note that DOH-Bay does not operate this site and cannot make appointments for this testing location. Appointments must be made online. Each site can test up to 500 people per day.

#### Florida Department of Health in Bay County Testing

DOH-Bay, 597 W 11<sup>th</sup> Street, Panama City

Criteria: All ages with symptoms or close contact to a confirmed COVID-19 case. Call (850) 872-4455 for screening Monday through Friday 8 a.m. to 5 p.m.

Test Type: PCR (Results in 3-5 days)

*Appointment required.*

*For additional testing options and information, visit [Bay.FloridaHealth.gov](http://Bay.FloridaHealth.gov)*

## Test Results

### *Florida Department of Health in Bay County Testing*

Exposed or tested positive? Look out for an official call from COVID-19 contact tracers. Answer calls from 833-673-0864 (0865,0866, 0867, 0868), 833-443-5364, or 850-583-2419, or county health departments to discuss potential exposure to COVID-19 with a contact tracer. Contact tracers will NEVER ask for your Social Security number or financial information. Save the numbers in your contacts so you never miss the call.

If you need physical copies of your COVID-19 test results, please follow the directions below:

Phone: Call (850) 872-4455 and follow the prompts to COVID test results prompts and request the status with the representative. You will be provided with the option to obtain your results in person (if negative) or electronically (negative or positive).

Office: If you come to our office, do not get out of your car. Please call (850) 872-4455 and follow the COVID test results prompts. Please let us know you are in the parking lot and we will deliver your results to you in your vehicle.

Email: You can make your request by emailing [baymedicalrecords@flhealth.gov](mailto:baymedicalrecords@flhealth.gov). After you complete the authorization form, you will need to respond with a picture of your photo ID, and we will send your result to you via an encrypted email. The email must be viewed on a desktop or laptop PC as the encryption is not mobile friendly.

*For results from other testing locations, please contact the site or provider where you were tested.*

### **For more information on COVID-19**

For text alert updates from the Florida Department of Health in Bay County, text "bayhealth" to 888-777. For additional information specific to Bay County, visit <http://bay.floridahealth.gov/> or BayHealthCOVID19.com. Contact the Citizens Information Center Monday through Saturday from 10 a.m. to 5 p.m. at (850) 248-6090, or email [ask@baycountyfl.gov](mailto:ask@baycountyfl.gov).

In order to make the daily COVID-19 report easier to download and more accessible, the daily report separates case line data in a separate PDF. The case line data report is available [here](#). The state also provides a report detailing surveillance data for every Florida county, which is available [here](#). The antibody COVID-19 test results report will be provided once a week and contains county, race and lab information on antibody COVID-19 tests conducted in Florida. The report for antibody tests conducted by private health care providers is available [here](#) and the report for antibody tests conducted at state-supported COVID-19 testing sites is available [here](#).

**More information on a case-by-case basis can also be found [here](#).**

To find the most up-to-date information and guidance on COVID-19, please visit the Department of Health's dedicated [COVID-19 webpage](#). For information and advisories from Centers for Disease Control and Prevention (CDC), please visit the [CDC COVID-19 website](#), this website is also available in Spanish and Creole. For more information about current travel advisories issued by the U.S. Department of State, please visit the [travel advisory website](#).

For any other questions related to COVID-19 in Florida, please contact the Department's dedicated COVID-19 Call Center by calling 1-866-779-6121. The Call Center is available 24 hours per day. Inquiries may also be emailed to [COVID-19@flhealth.gov](mailto:COVID-19@flhealth.gov).

###

About the Florida Department of Health

The Department, nationally accredited by the Public Health Accreditation Board, works to protect, promote and improve the health of all people in Florida through integrated state, county and community efforts. Follow us on Facebook, Instagram and Twitter at @HealthyFla. For more information about the Florida Department of Health, please visit [www.FloridaHealth.gov](http://www.FloridaHealth.gov).